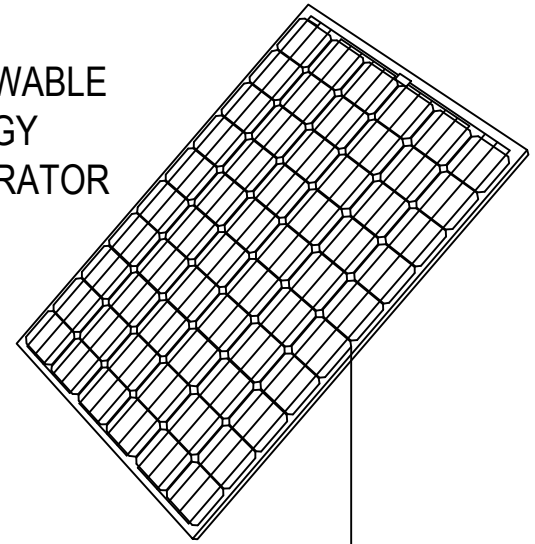


****SEIEC DOES NOT ALLOW SUPPLY SIDE TAPS, OR INSULATION PIERCING CONNECTORS (IPC's)****
*****Rapid shutdown is required on all installations.**

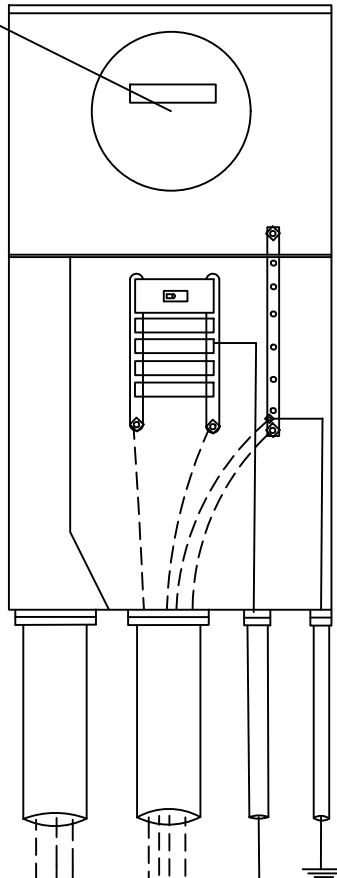
RENEWABLE ENERGY GENERATOR



All distributive generation facilities that request interconnection to the Cooperative's facilities must comply with the following specifications and standards:

- IEEE Standard 1547, including all future updates and amendments
- National Electric Safety Code (NESC)
- National Electric Code (NEC)
 - NEC 690.12 "RAPID SHUTDOWN"
 - UL 1741, 1741 SA
- American National Standards Institute (ANSI)
- Labeling of all PV Equipment Required
- All future, applicable standards that govern such installation including that of federal, state and local authorities

BI-DIRECTIONAL METER



SEIEC

MEMBERS LOAD

WITHIN 10 FEET OF METER

NON-FUSIBLE DISCONNECT

INVERTER



SOUTHEASTERN ILLINOIS ELECTRIC COOP.
 GENERATION FACILITY
 NET BILLING
 INTERCONNECTION

			DRAWN: KAH	DESIGNED:	DATE: 7-2019
NO.	REVISION	DATE	SE-30		